

Servicing Outdoor Power Equipment Dealers Since 1984
8 McFadden Road ☉ Easton, PA 18045 ☉ (800) 942-2326 ☉ <https://shop.cadcodist.com/>

Stinger Information

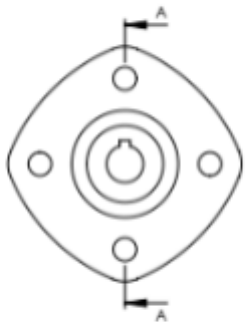
INFORMATIONAL BULLETIN 2024-1

QA30 Wheel Motor Hub & Keyway Change

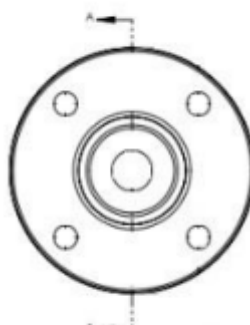
Valued Customer,

Thank you for purchasing a Stinger QUAD-AER.

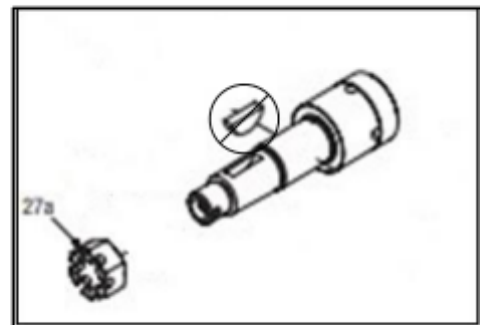
Summary: On the QA3000, we received and produced the units utilizing the keyed shaft provided by the OEM. Through extensive testing, in concert with the supplier, we superseded the keyed hub and removed the key. We still utilize the 3/4-16 castle nut and cotter pin attachment method (Item 27a in figure). When properly torqued the keyless taper provides a truer fit and decreases the opportunity for shaft/hub wear and damage.



Previous



Replaced By



Remove Key

Why: Truer fit and less opportunity for component damage over extended use. Improved longevity.

Recommendation: Inspect wheel hub fit on the existing unit. Verify the torque of the castle nut is 240 ft-lbs. Should you replace a wheel hub, a keyless hub will be provided. Remove the key from the wheel motor shaft. Clean hub with brake cleaner or some other type of degreaser. Install the keyless wheel hub. Torque the castle nut to 240 ft-lbs and continue to tighten the nut until the opening in the castle nut and shaft hole align, then install and secure the cotter pin.

****Never loosen the nut to align cotter pin window***

